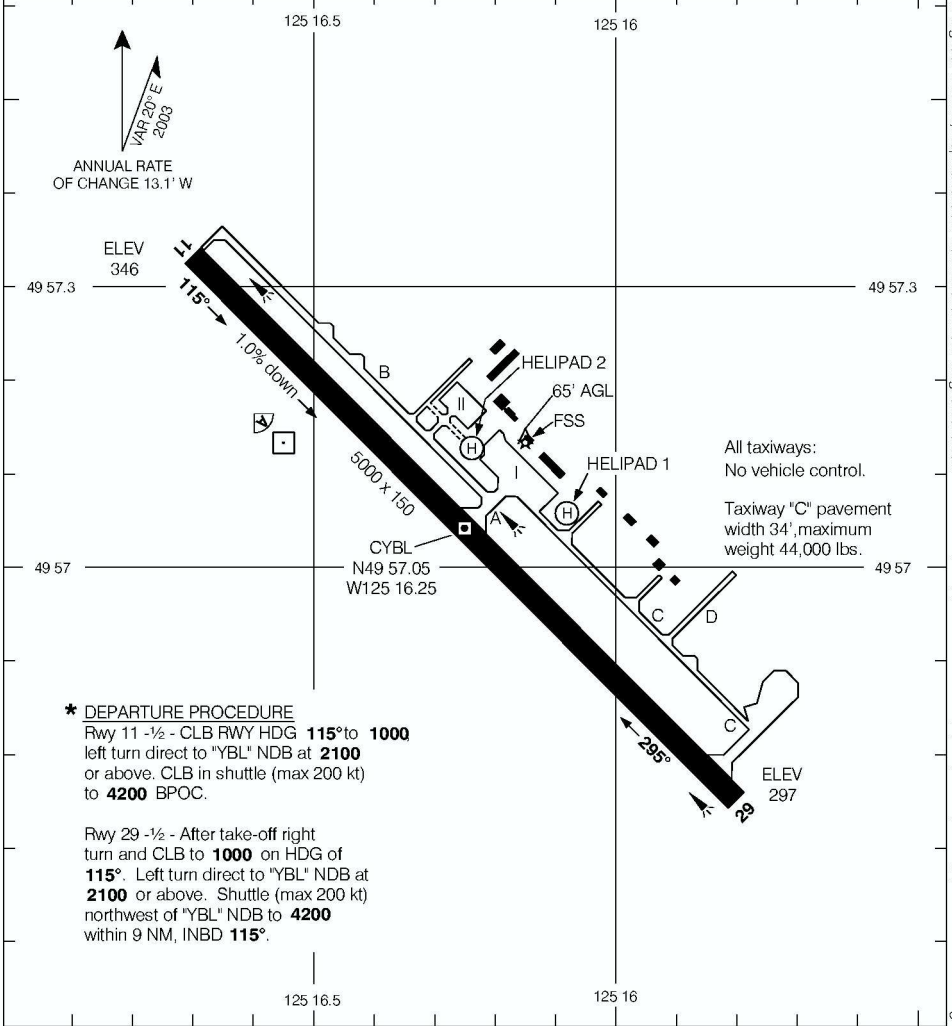


# AERODROME CHART

CAMPBELL RIVER  
CAMPBELL RIVER BC

|                       |  |  |
|-----------------------|--|--|
| <b>ATIS</b><br>128.55 | <b>RADIO</b><br>122.0 (MF 5 NM) 296.6<br>O/T TFC 122.0 | <b>DEP</b><br><b>COMOX TERMINAL</b><br>123.7 227.6 |
|-----------------------|--|--|

| DECLARED DISTANCES | 11   | 29   |      |  |  |  |  |  |
|--------------------|------|------|------|--|--|--|--|--|
|                    | TORA | 5000 | 5000 |  |  |  |  |  |
| TODA               | 6000 | 6000 |      |  |  |  |  |  |
| ASDA               | 5000 | 5000 |      |  |  |  |  |  |
| LDA                | 5000 | 5000 |      |  |  |  |  |  |



**\* DEPARTURE PROCEDURE**  
 Rwy 11 -½ - CLB RWY HDG **115° to 1000**  
 left turn direct to "YBL" NDB at **2100**  
 or above. CLB in shuttle (max 200 kt)  
 to **4200** BPOC.  
  
 Rwy 29 -½ - After take-off right  
 turn and CLB to **1000** on HDG of  
**115°**. Left turn direct to "YBL" NDB at  
**2100** or above. Shuttle (max 200 kt)  
 northwest of "YBL" NDB to **4200**  
 within 9 NM, INBD **115°**.

|                 |               |
|-----------------|---------------|
| TAKE-OFF MINIMA | SCALE IN FEET |
| Rwys 11, 29: *  | 1000 0 1000   |

© 2006 Her Majesty The Queen In Right of Canada, Department of Natural Resources All rights reserved  
 Source of Canadian Civil Aeronautical Data © 2006 NAV CANADA All rights reserved