

AERODROME CHART

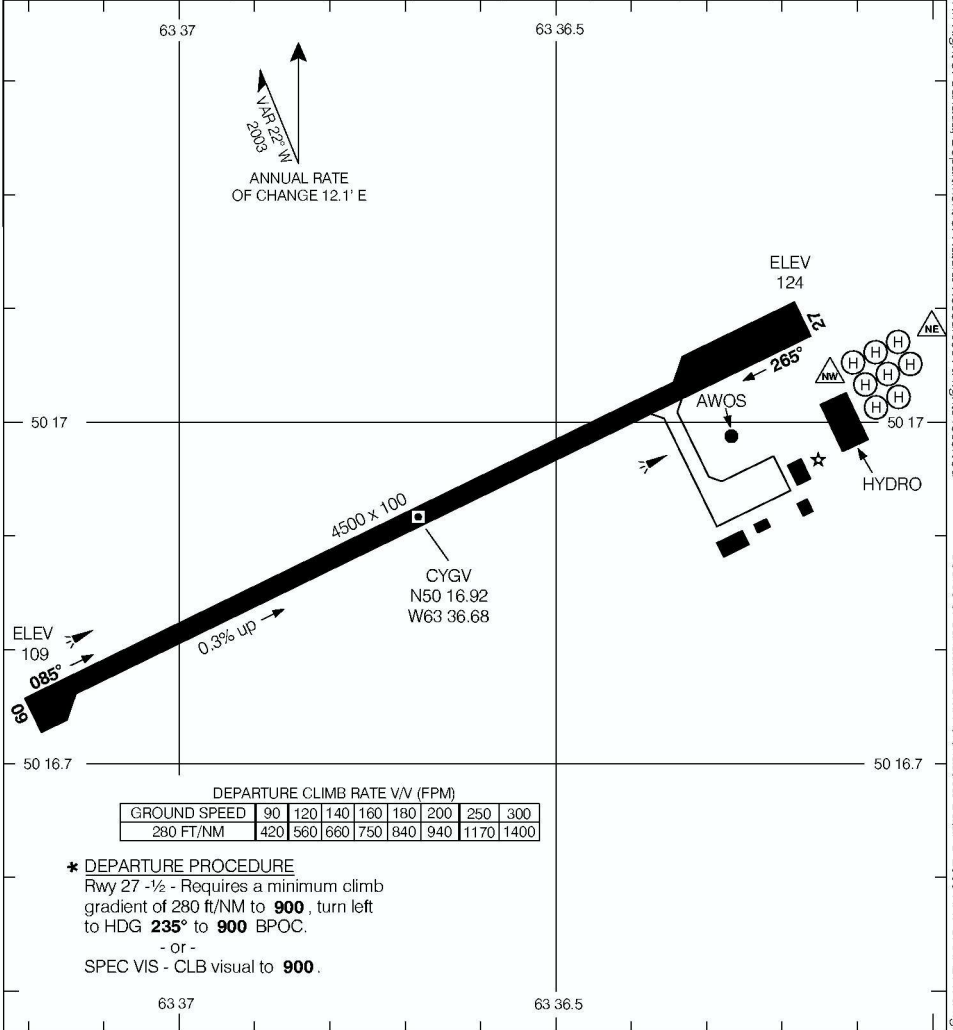
HAVRE ST-PIERRE
HAVRE ST-PIERRE QC

AWOS
125.95 (Eng)
128.3 (Fr)

RADIO QUEBEC
122.0 (MF 15 NM)
O/T TFC 122.0

DECLARED DISTANCES

	09	27					
TORA	4500	4500					
TODA	4500	4500					
ASDA	4500	4500					
LDA	4500	4500					



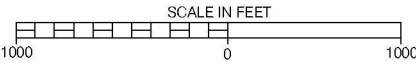
DEPARTURE CLIMB RATE V/V (FPM)

GROUND SPEED	90	120	140	160	180	200	250	300
280 FT/NM	420	560	660	750	840	940	1170	1400

*** DEPARTURE PROCEDURE**
Rwy 27 -½ - Requires a minimum climb gradient of 280 ft/NM to **900**, turn left to HDG **235°** to **900** BPOC.
- or -
SPEC VIS - CLB visual to **900**.

TAKE-OFF MINIMA

Rwy 09: ½
Rwy 27: *



AERODROME CHART

HAVRE ST-PIERRE QC
HAVRE ST-PIERRE

EFF 3 AUG 06 CHANGE: Comm RADIO

© 2006 Her Majesty The Queen In Right of Canada, Department of Natural Resources All rights reserved
Source of Canadian Civil Aeronautical Data © 2006 NAV CANADA All rights reserved