

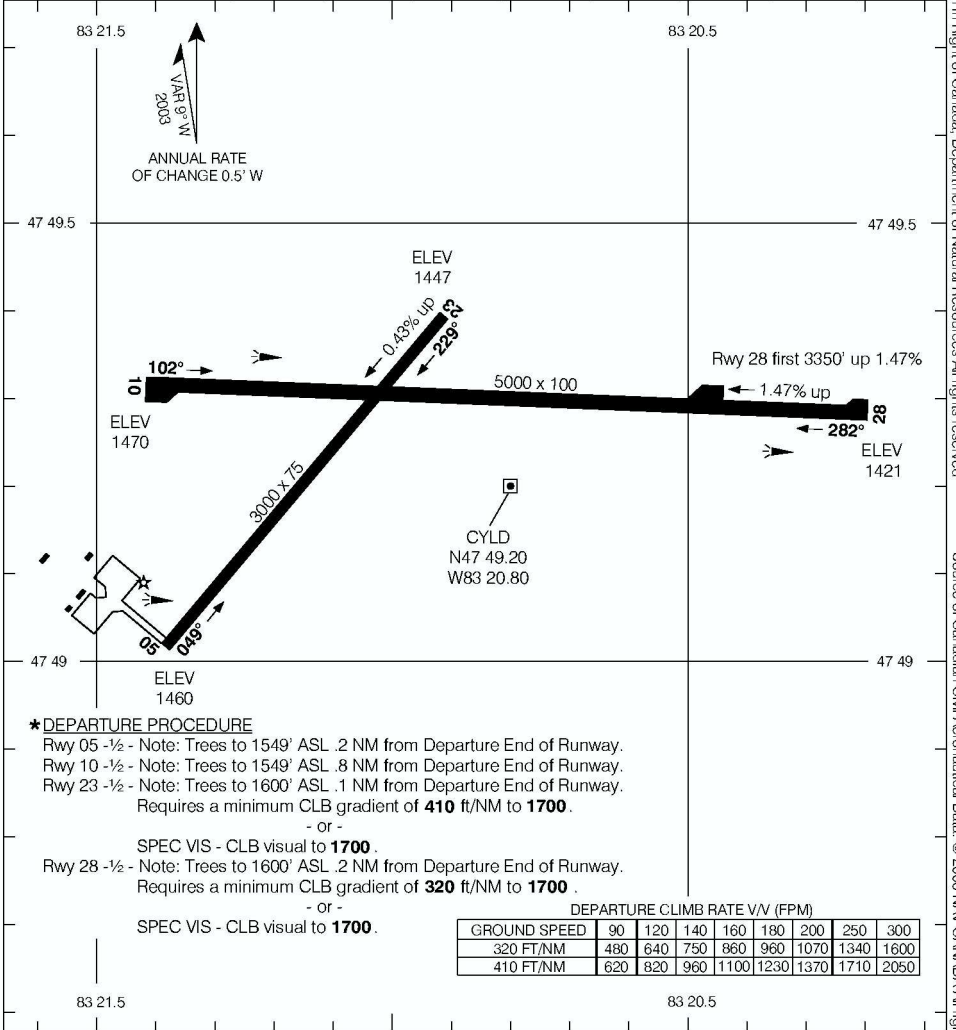
# AERODROME CHART

CHAPLEAU  
CHAPLEAU ON

UNICOM (AU)  
122.8 (ATF 5 NM)  
O/T TFC 122.8

### DECLARED DISTANCES

	05	23	10	28				
TORA	3000	3000	5000	5000				
TODA	3000	3000	5000	5000				
ASDA	3000	3000	5000	5000				
LDA	3000	3000	5000	5000				



### \* DEPARTURE PROCEDURE

Rwy 05 -½ - Note: Trees to 1549' ASL .2 NM from Departure End of Runway.

Rwy 10 -½ - Note: Trees to 1549' ASL .8 NM from Departure End of Runway.

Rwy 23 -½ - Note: Trees to 1600' ASL .1 NM from Departure End of Runway.

Requires a minimum CLB gradient of **410 ft/NM to 1700**.

- or -

SPEC VIS - CLB visual to **1700**.

Rwy 28 -½ - Note: Trees to 1600' ASL .2 NM from Departure End of Runway.

Requires a minimum CLB gradient of **320 ft/NM to 1700**.

- or -

SPEC VIS - CLB visual to **1700**.

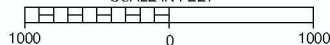
### DEPARTURE CLIMB RATE V/V (FPM)

GROUND SPEED	90	120	140	160	180	200	250	300
320 FT/NM	480	640	750	860	960	1070	1340	1600
410 FT/NM	620	820	960	1100	1230	1370	1710	2050

### TAKE-OFF MINIMA

All Rwys: \*

### SCALE IN FEET



# AERODROME CHART

EFF 8 JUN 06

CHANGE: Revised

CHAPLEAU ON

CHAPLEAU

NAD83

© 2006 Her Majesty The Queen In Right of Canada, Department of Natural Resources All rights reserved. Source of Canadian Civil Aeronautical Data: © 2006 NAV CANADA All rights reserved.