

AERODROME CHART - ICAO

ARP 555700N 0032221W

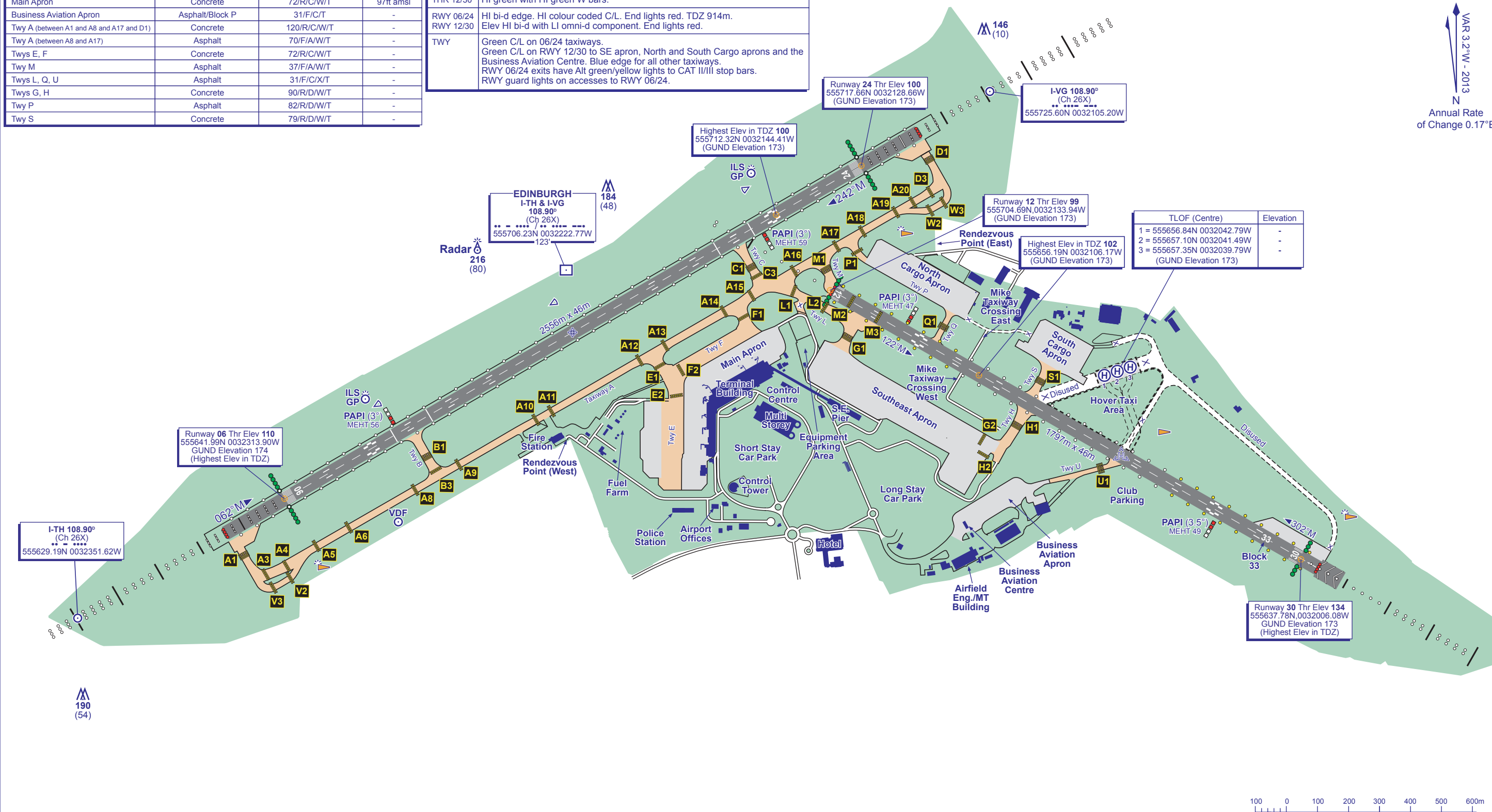
AD ELEV 136FT

EDINBURGH EGPH

| RUNWAY/TAXIWAY/APRON PHYSICAL CHARACTERISTICS | | | |
|---|-----------------|------------------|------------|
| APRON / RWY / TWY | SURFACE | BEARING STRENGTH | ELEVATION |
| RWY 06/24 | Grooved Asphalt | 87/R/C/W/T | - |
| RWY 12/30 | Grooved Asphalt | 31/F/C/X/T | - |
| North Cargo Apron | Block Paving | 31/F/C/X/T | 103ft amsl |
| South Cargo Apron | Concrete | 79/R/D/W/T | - |
| Southeast Apron | Concrete | 72/R/C/W/T | - |
| Main Apron | Concrete | 72/R/C/W/T | 97ft amsl |
| Business Aviation Apron | Asphalt/Block P | 31/F/C/T | - |
| Twy A (between A1 and A8 and A17 and D1) | Concrete | 120/R/C/W/T | - |
| Twy A (between A8 and A17) | Asphalt | 70/F/A/W/T | - |
| Twys E, F | Concrete | 72/R/C/W/T | - |
| Twy M | Asphalt | 37/F/A/W/T | - |
| Twys L, Q, U | Asphalt | 31/F/C/X/T | - |
| Twys G, H | Concrete | 90/R/D/W/T | - |
| Twy P | Asphalt | 82/R/D/W/T | - |
| Twy S | Concrete | 79/R/D/W/T | - |

| COM | | |
|-----------|---|-------------------------|
| ATIS | 131.350 | EDINBURGH TERMINAL INFO |
| TWR | 118.700 | EDINBURGH TOWER |
| | 121.750 (GMC) | EDINBURGH GROUND |
| | 121.600 | EDINBURGH FIRE |
| LIGHTING | | |
| THR 06/24 | HI green with HI green W bars. | |
| THR 12/30 | HI green with HI green W bars. | |
| RWY 06/24 | HI bi-d edge. HI colour coded C/L. End lights red. TDZ 914m. | |
| RWY 12/30 | Elev HI bi-d with LI omni-d component. End lights red. | |
| TWY | Green C/L on 06/24 taxiways. Green C/L on RWY 12/30 to SE apron, North and South Cargo aprons and the Business Aviation Centre. Blue edge for all other taxiways. RWY 06/24 exits have Alt green/yellow lights to CAT II/III stop bars. RWY guard lights on accesses to RWY 06/24. | |

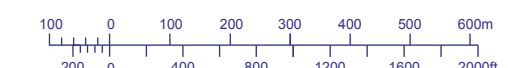
| | |
|---|--------------------|
| GUND (Geoid Undulation) = The height of the Geoid (MSL) above the Reference Ellipsoid (WGS 84) at the stated position. | |
| BEARINGS ARE MAGNETIC ELEVATIONS AND HEIGHTS ARE IN FEET | |
| ELEVATIONS IN FEET AMSL | 216 (80) |
| HEIGHTS IN FEET ABOVE AD | (80) |



156 (20)
173 (37)

VAR 3.2°W - 2013
N
Annual Rate of Change 0.17°E

| TLOF (Centre) | Elevation |
|----------------------------|-----------|
| 1 = 555656.84N 0032042.79W | - |
| 2 = 555657.10N 0032041.49W | - |
| 3 = 555657.35N 0032039.79W | - |



CHANGE (13/13): NEW APRON ABEAM RWY 30 THRESHOLD.