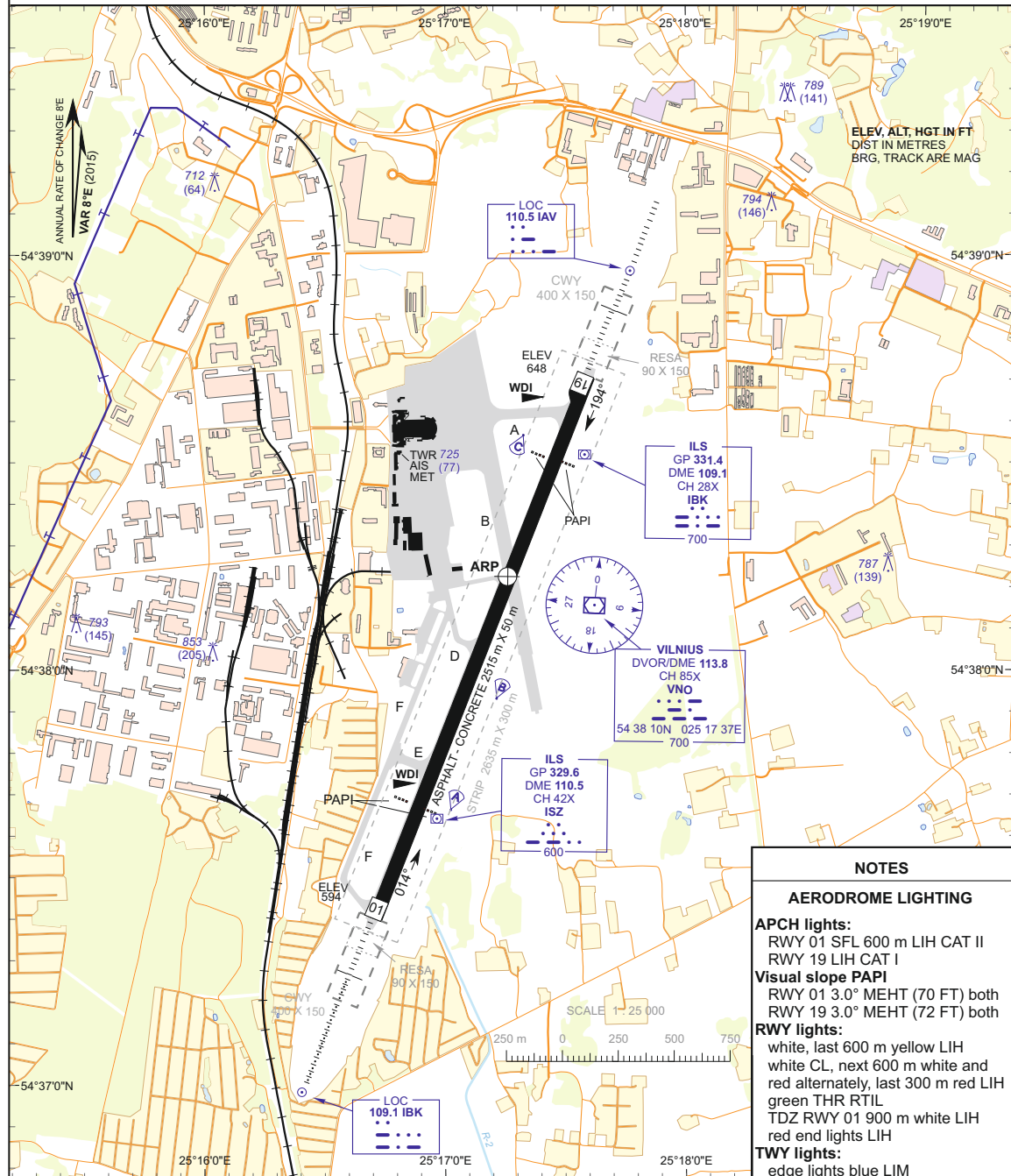


AERODROME CHART - ICAO	54 38 13N 025 17 16E Geoid undulation 25.0 m 82 FT	AERODROME ELEV 648 HEIGHTS RELATED TO AD ELEV	TWR 118.200 ATIS 125.800	VILNIUS
---------------------------	--	---	-----------------------------	---------



NOTES	
AERODROME LIGHTING	
APCH lights: RWY 01 SFL 600 m LIH CAT II RWY 19 LIH CAT I	
Visual slope PAPI RWY 01 3.0° MEHT (70 FT) both RWY 19 3.0° MEHT (72 FT) both	
RWY lights: white, last 600 m yellow LIH white CL, next 600 m white and red alternately, last 300 m red LIH green THR RTIL TDZ RWY 01 900 m white LIH red end lights LIH	
TWY lights: edge lights blue LIM red stop bars lights; holding positions TWY A, B, D, E and F LIL	

RWY	TRUE DIRECTION	THR	STRENGTH	DECLARED DISTANCES			
				TORA	TODA	ASDA	LDA
01	021.89°	54 37 25N 025 16 43E	PCN 83	2515	2915	2515	2515
				From TWY D 1265	1665	1265	-
19	201.89°	54 38 41N 025 17 35E	F / D / X / T	2515	2915	2515	2515
				From TWY A 2300	2700	2300	-
				1250	1650	1250	-

RWY 01/19 Elevated RWY edge lights 0.30 m
WARNING:
slope from THR 01 to ARP (+0.41%) slope from THR 19 to ARP (-1.08%)

Changes: RWY designation; VAR and date of VAR; obstacles; MAG direction.